

The Healing Journey of Helpers: *The necessity of wholeness in fulfilling our divine purpose concerning God's children*

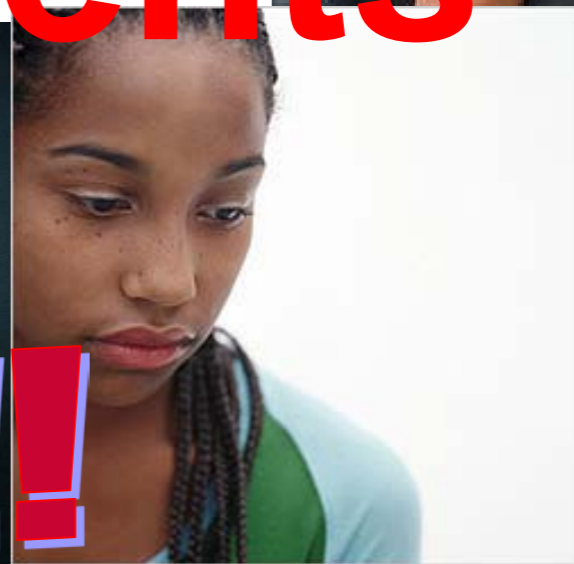
Dr. Raquel Hatter – Presenter

kidsfirst11@comcast.net

615-752-8960 or 615-941-5535



God Doesn't Give Easy Assignments



TOUGH TIMES!!

EDUCATING FOR TOUGH TIMES

international transforming education conference

TOUGH TIMES!!!

HUMAN TRAFFICKING

DIVISION/HATE

RISING POVERTY RATES

\$ \$ \$

GLOBAL UNREST

WARS

Spiritually Broken

EDUCATING FOR TOUGH TIMES

international transforming education conference

Transform - Make a thorough or dramatic change in the form; a marked difference

This is a season of BELIEVING and KNOWING

Now faith is the substance of things hoped for and the evidence of things not seen. Heb 11:1 Wow!



HOPE VS. ODDS

EDUCATING FOR TOUGH TIMES

international transforming education conference

The Reality of Purpose

***Purpose is the reason
anything is done or anyone
is created or exists.***

Intentional

***Clarity of purpose
serves as a source of
guidance, strength and
confidence.***

***To walk in our divine purpose is to
honor and worship Christ***

**Jer 29:11 "For I know the plans I
have for you," declares the Lord,
"plans to prosper you and not to
harm you, plans to give you hope
and a future."**

**Phil 1:6 being confident of this, that
he who began a good work in you
will carry it on to completion until
the day of Christ Jesus.**

EDUCATING FOR TOUGH TIMES

international transforming education conference

The Heart of God & Our Purpose

“A youth who put his fist through a window”

An anointed perspective/insight/empathy

“A youth who was left with 4 siblings younger than him resulted in a fatal outcome-he was 8yrs old”

EDUCATING FOR TOUGH TIMES

international transforming education conference



Count the cost of the journey

"Suppose one of you wants to build a tower. He will first sit down and estimate the cost to see whether he has enough money to finish it, won't he? Luke 14:28

So what does it mean to count the cost?

EDUCATING FOR TOUGH TIMES

international transforming education conference



Counting the cost of the journey

***Accept the reality that there are some inherent challenges on the journey
“But for Jesus Moments”***

Spiritual attacks are inevitable especially when you are on the “frontline”

The light of Christ on the inside of us: Light & Dark can't dwell together

Relationship with Christ: Nurturing It

EDUCATING FOR TOUGH TIMES

international transforming education conference

Personal Revelation as a Parent, Helper & Leader

➤ ***Passionate, Dedicated, Skilled Helpers in Pain***

➤ ***A Helpers most strategic tool is self***

➤ **Being human involves inherent brokenness & struggle**

➤ ***Heal-* make sound or whole, to restore, overcome an undesirable condition**

➤ ***Wholeness-* restored spiritually, mentally & emotionally sound**

EDUCATING FOR TOUGH TIMES

international transforming education conference

The Helper's Mandate - Wholeness

We do a different kind of “**HEART SURGERY**”

FIRST DO NO HARM!

Young people see & experience our brokenness

Brokenness

Having been fractured or damaged

DON'T HOLD YOUNG PEOPLE HOSTAGE TO OUR PAST

Can't give that which we don't have

EDUCATING FOR TOUGH TIMES

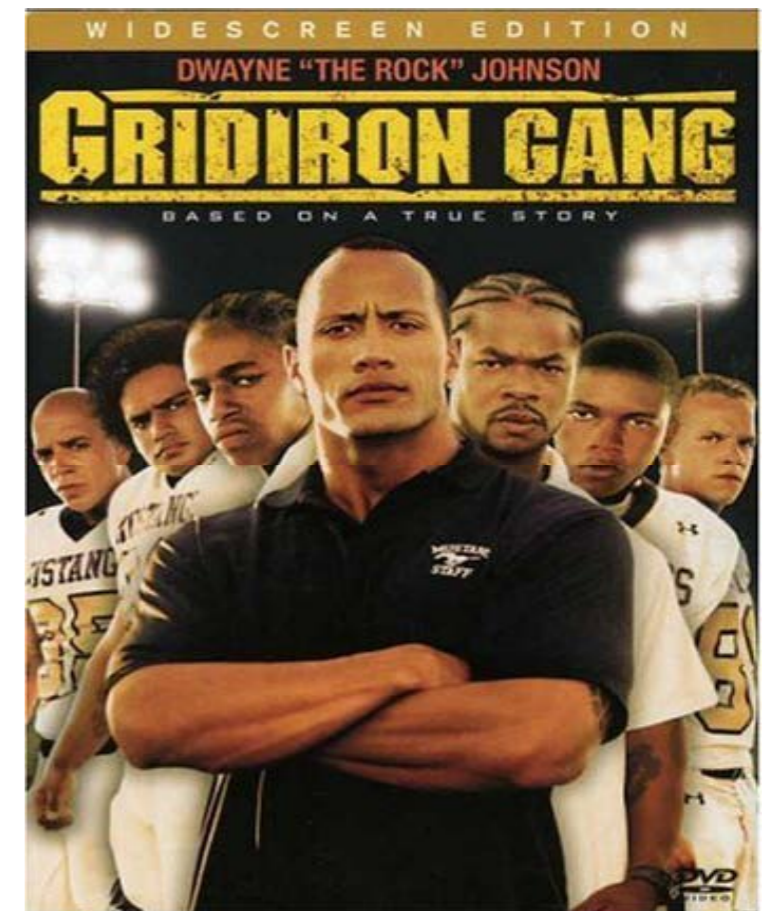
international transforming education conference

Deliverance-Wholeness-Dominion Opportunities on the Journey

Humility as a prerequisite

Where the spirit of the Lord is there is Liberty

II Cor 3:17



EDUCATING FOR TOUGH TIMES

international transforming education conference

rejection

Anger

Distrust

ISSUES

Low Self-Worth

Anger

control

EDUCATING FOR TOUGH TIMES

international transforming education conference

Some Sources of Adult Brokenness or Pain in Helpers

- Adult children of alcoholic or substance abusing parents
- Being raised in families that struggle with racism, sexism, classism etc.
- Being raised in families that struggle perfectionism or un-affirming
- Physical, sexual, or emotional abuse
- Adult children of divorce
- Relationship Betrayals
- Domestic Violence
- Loss of a primary caregiver very early in life
- Opportunities for pain and struggle are abundant*

- ***What might a helper's struggle with the following unresolved issues look like in the workplace?***

- Rejection/Shame – difficulty hearing constructive criticism or casual feedback; projective identification – can be true for all issues; difficulty giving and receiving unconditional love

- Low Self Worth – make assumptions about others perceptions' of us or hypercritical of others; over react when young people say “offensive things” or make personal verbal assaults. (on some level we might actually believe it)

- Distrust – the tendency to assume there is more to it; or there must be a hidden agenda; “conspiracy theorist” “Their against me”

- Control – power struggles, difficulty empowering and giving choice, over exertion of authority, turf & territorial challenges, struggles with authority and rules

- Anger – Counter aggression, tendency to escalate situations

EDUCATING FOR TOUGH TIMES

international transforming education conference

Some Strategies for the Wholeness Journey

- Anchor – constantly remind yourself of your importance to Christ
- Ongoing forgiveness of self and others – avoid condemnation; fall down and get back up again 😊
- Extend grace toward your self and others
- Surround yourself with those who will give you Godly counsel
- Always seek to be searched by God
- Embrace humor
- Tend to your whole person – mind, body, soul, spirit
- ALWAYS GIVE GOD THE GLORY

Understanding and Embracing God as Our Invisible Partner As we fulfill the Mandate

Take God at His Word

A renewed mind

Discernment

Spiritual warfare

Nehemiah Focus

God's Grace Is Sufficient

As thy days so shall thy strength be

Agape Love & Sacred Encounters

The Battle is Not Ours! Its already done

EDUCATING FOR TOUGH TIMES

international transforming education conference

I consider my life worth nothing to me,
if only I may finish the race and complete
the task the Lord Jesus has given to me —
the task of testifying to the gospel of God's grace.

- Acts 20:24



HEARTLIGHT

<http://www.heartlight.org>

© 2002, Ben Steed.

EDUCATING FOR TOUGH TIMES

international transforming education conference